



Chevrolet 2007-2008 2500HD/3500HD Grille Guard Installation Instructions

1) Remove 8 bolts that mount factory bumper and tow hooks to truck frame. Discard all bolts **except** 2 that bolt under truck frame. (*see figure 1*)

2) Slide bracket through tow hook cutout and place on the outside of the truck frame. Secure in place through top 4 holes with (4) $\frac{1}{2}$ " x 5" bolts provided. Install tow hook through frame and secure with (2) $\frac{1}{2}$ " x 5" bolts provided. Use two $\frac{1}{2}$ " washers as spacers between bracket and truck frame. (*see figure 2*)

3) Install bolts that were retained from step 1 through truck frame and tow hook. Tighten all bolts with 75 lbs of torque.



Figure 1

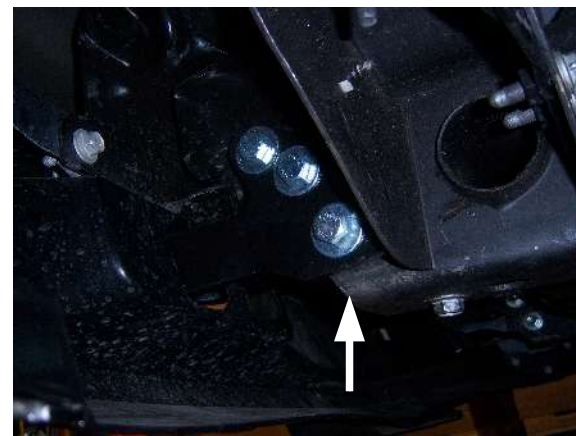


Figure 2

4) Lift grille guard over the brackets , ensuring that brackets are to the inside of the uprights and secure with (6) 1/2" x 1 1/2" bolts provided. Adjust grille guard and check that it is level vertically and tighten bolts with 75 lbs of torque. (see figure 3)



Figure 3

5) Lift hood and remove 8 plastic factory tabs that secure radiator cover in place. Retain hardware and set cover to the side for future installation. (see figure 4)



Figure 4

6) Remove 2 bolts that are on top of the truck frame. Retain bolts. (see figure 5)



Figure 5

7) Slide top bracket under truck grille and align holes. Secure in place with bolts removed in step 6. Secure opposite end of bracket to the grille guard upright using (2) 1/2" x 1 1/2" bolts provided. (see figure 6 and 7)

8) Tighten bolts with 75 lbs of torque.

9) Install radiator cover removed in step 5 using hardware retained.



Figure 6



Figure 7

Installation Kit Provided:

- | | |
|--------------------------|-----------------------------------|
| (1) Bottom Bracket left | (6) 1/2" x 5" hex bolts |
| (1) Bottom Bracket right | (8) 1/2" x 1 1/2" hex bolts black |
| (1) Top Bracket left | (8) 1/2" flat washers black |
| (1) Top Bracket right | (6) 1/2" hex nuts |
| | (8) 1/2" hex nuts black |
| | (8) 1/2" flat washers |